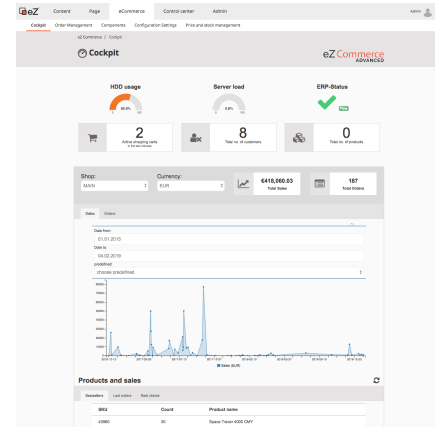
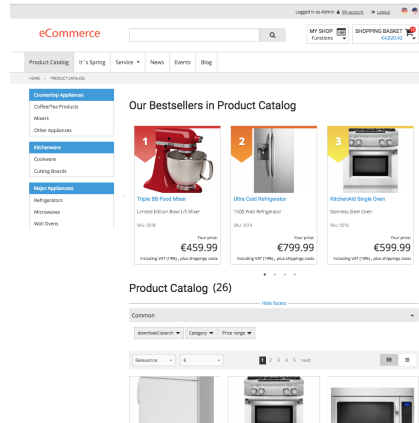


Documentation center

eZ Commerce for eZ Platform

eZ Commerce is an add-on to eZ Platform that turns eZ Platform (version 2) into a high performance content and e-Commerce platform.

eZ Commerce supports different e-commerce use cases and goes beyond the simple e-shop. In particular, it provides a set of advanced features focusing on B2B e-commerce use cases with reliable, fast and flexible connection to the leading ERP and PIM systems.



Version 2.5 - June 2019

eZ Commerce offers a lot of new features and improvements

- New features
 - Editing of addresses in the backend
 - improved job system in backend
 - Improvements for eContent - bestsellers
 - Improved landingpage features
 - Improved editing for specification data (unit field)
 - Contact forms are pre filled if user is logged in
 - New ERP transport layer for Microsoft Dynamics NAV
- Further changes
 - eZ Commerce 2.5 comes with eZ Platform version 2.5.1
 - Support for the eZ design engine

The documentation has been written for users who are working on a daily base with the ecommerce platform and for developers planning to use eZ Commerce in order to extend the functionality of the software.

For frontend developers there is a own section [Frontend customizing](#) describing how to change templates and the designs.

Quick tour

These documents offer a good introduction into how the shop works:

- [Getting started](#) for developers
- [User manual](#) - The guide for shop owners
- [How does the shop communicate with the ERP](#) (Advanced version only)

Interesting topics for eZ developers

- The [Template resolver](#) offers flexible override features as known in the former eZ Publish 4 version
- A nice [Configuration](#) tool allows to edit config resolver settings in the backend of the shop

- Use the new Page Builder for the eShop: [Landingpages](#)
- Where to find the master templates: [3. Templates](#)
- Common [Search](#) for products and content

For shop manager

- [General](#)
- [Shop administration](#)
- [Managing content](#)

For developers

- [Basket](#)
- [Bestseller](#)
- [Breadcrumbs](#)
- [Caching in the shop](#)
- [Catalog](#)
- [eContent](#)
- [Checkout](#)
- [Customers](#)
- [Delegate Function](#)
- [Integrate ERP systems](#)
- [Logging](#)
- [Login and registration](#)
- [Navigation](#)
- [Newsletter](#)
- [One-page forms](#)
- [Orderhistory](#)
- [Landingpage with Page Builder](#)
- [Payment](#)
- [Price Engine](#)
- [Product comparison](#)

[Full technical documentation](#)